

TRAYSLIDES: G-SERIES 1-SECTION

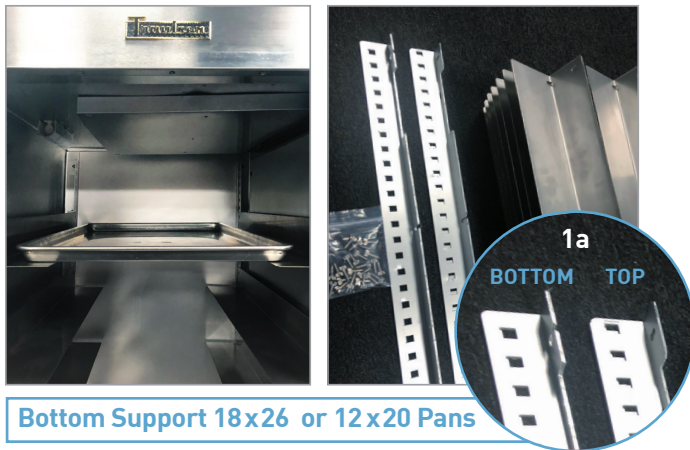


Parts	Universals		#1 Trayslides		#4 Trayslides	
Kit Model	G1ACC-TK4		G1ACC-TK1		G1ACC-TK2	
	Model #	QTY	Model #	QTY	Model #	QTY
Top Pilasters: Left Front, Right Rear	342-60171-01	2	342-60169-01	2	342-60169-01	2
Bottom Pilasters: Left Front, Right Rear	342-60171-02	2	342-60169-02	2	342-60169-02	2
Top Pilasters: Right Front, Left Rear	342-60172-01	2	342-60170-01	2	342-60170-01	2
Bottom Pilasters: Right Front, Left Rear	342-60172-02	2	342-60170-02	2	342-60170-02	2
Thumb Screws	351-15822-07	24	351-15822-07	24	351-15822-07	24
Trayslide Inserts	701-60039-00	14	701-60032-00	16	340-04842-00	4

RECOMMENDED TOOLS:

Flathead Screwdriver & Rubber Mallet

INSTALL UNIVERSALS

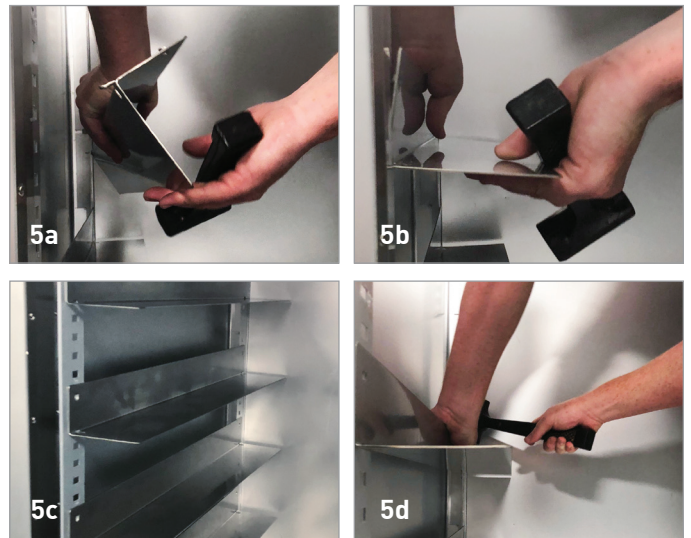


Bottom Support 18x26 or 12x20 Pans

KIT: G1ACC-TK4

TRAYSLIDE PART: 701-60039-00

- (Fig. 1a) Identify the top side of each pilaster.
- Remove the factory installed shelves, pins, and pilasters.
- Install the top section pilasters with 3 thumb screws each.
 - Hand tighten the thumb screws, check that the pilasters are parallel with the sides of the cabinet, and then tighten down with a flathead screwdriver.
- Repeat step 2 with the bottom section pilasters.



5. Begin installing the trayslides on one side from bottom to top.

- (Fig. 5a) Insert all tabs on one side (left/right) and press down to lock them into the pilaster.
- (Fig. 5b) Insert all tabs on the other side and press down to lock them into the pilaster.
- (Fig. 5c) Check that the tray slides are level and on the same pilaster slots.
- (Fig. 5d) Using a rubber mallet, tap down the trayslide near both pilasters to lock the trayslides into place.

6. Repeat step 5 on the other side of the cabinet.

7. Test on all sets of trayslides to make sure that the pilasters and trayslides have been installed level.

INSTALL #1 TRAYSLIDES

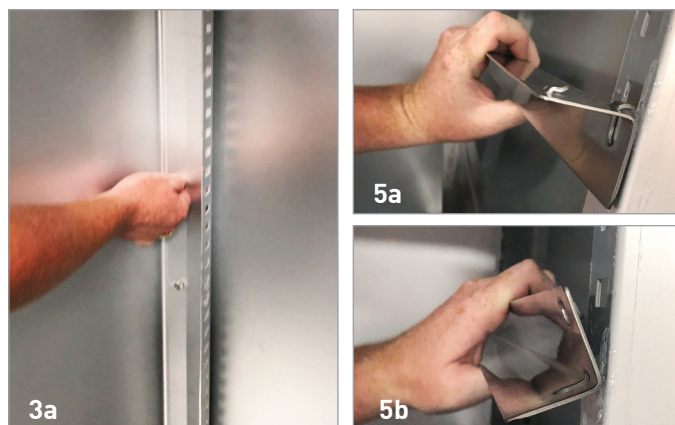


Bottom Support of 18x26 Sheet Pans

KIT: G1ACC-TK1

TRAYSLIDE PART: 701-60032-00

1. (Fig. 1a) Identify the top side of each pilaster.
2. Remove the factory installed shelves, pins, and pilasters.
3. (Fig. 3a) Install the top section pilasters with 3 thumb screws each.
 - Hand tighten the thumb screws, check that the pilasters are parallel with the sides of the cabinet, and then tighten down with a flathead screwdriver.
4. Repeat step 2 with the bottom section pilasters.



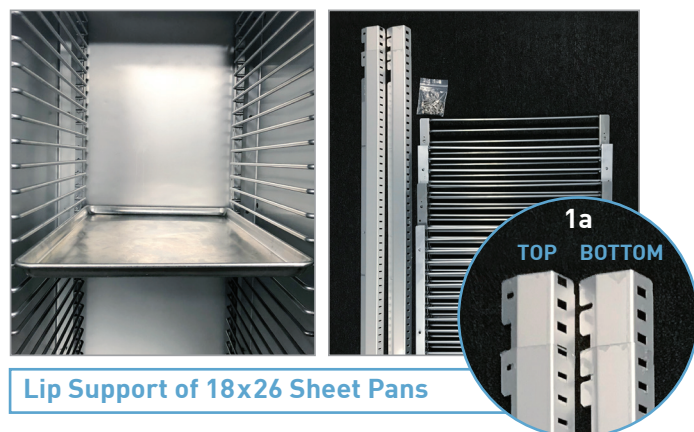
5. Begin installing the trayslides on one side from bottom to top.

- (Fig. 5a) Insert the bottom set of tabs into the slots at desired height.
- (Fig. 5b) On one side, insert the top tab into the pilaster slot, and tap the top of the trayslide near that pilaster with a rubber mallet.
- Repeat on the other side of the trayslide while being careful not to unseat the side that was installed first.
- Once both ends are seated in the pilaster slots, tap the top of the trayslide with a rubber mallet near both pilasters to secure it.

6. Repeat step 5 on the other side of the cabinet.

7. Test on all sets of trayslides to make sure that the pilasters and trayslides have been installed level.

INSTALL #4 TRAYSLIDES



Lip Support of 18x26 Sheet Pans

KIT: G1ACC-TK2

TRAYSLIDE PART: 340-04842-00

1. (Fig. 1a) Identify the top side of each pilaster.
2. Remove the factory installed shelves, pins, and pilasters.
3. Install the top section pilasters with 3 thumb screws each.
 - Hand tighten the thumb screws, check that the pilasters are parallel with the sides of the cabinet, and then tighten down with a flathead screwdriver.
4. Repeat step 2 with the bottom section pilasters.



5. Begin installing the trayslides on one side from bottom to top.

- (Fig. 5a) Line up tabs on the trayslides with the pilasters
- (Fig. 5b) Fit the tabs in place and push downward to lock into position.
- If not all of the tabs fit into the pilasters, check that the pilasters are straight and right side up.

6. (Fig. 6a) Repeat step 5 on the other side of the cabinet.

7. Test on all sets of trayslides to make sure that the pilasters and trayslides have been installed level.