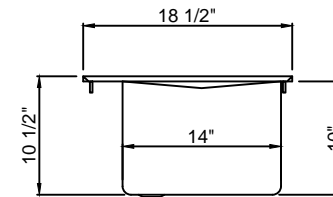
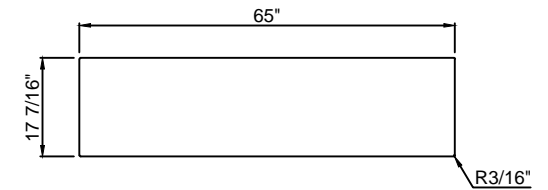


FRONT ELEVATION

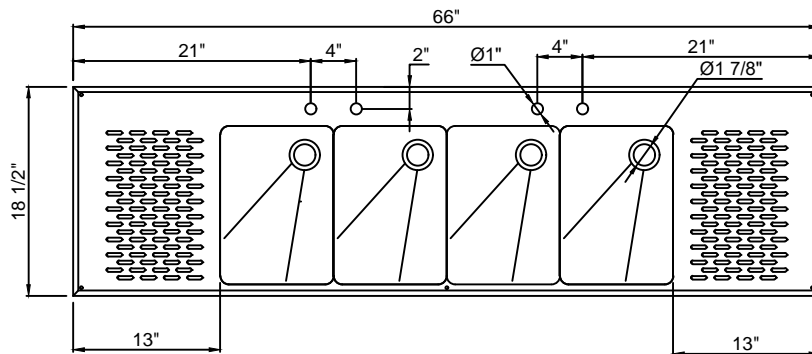


SIDE VIEW

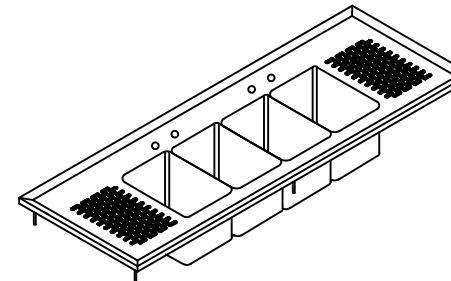
● 18 GA. STAINLESS STEEL
CONSTRUCTION.



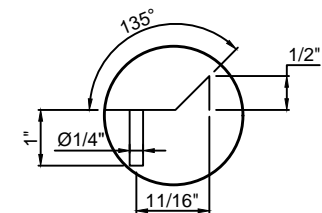
CUT-OUT SIZE



PLAN VIEW



ISOMETRIC



DETAIL "A"

DRAWIN FOR :	MAT.	TOP : 18 GA. S/S BASE :	DATE	REVISIONS	KLINGER'S TRADING
REF. NO :		REQ'D/ITEM :			
ITEM NAME : Drop in Bar Sinks		DATE : Apr / 12 / 2021			
PROD . NO. : DBS42D		BY :			
SCALE: 1/2" =1'-0"		CHECKED BY :			