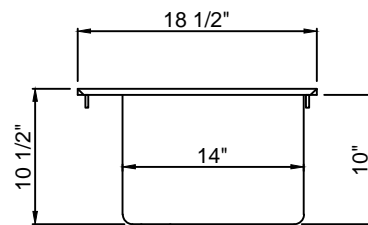
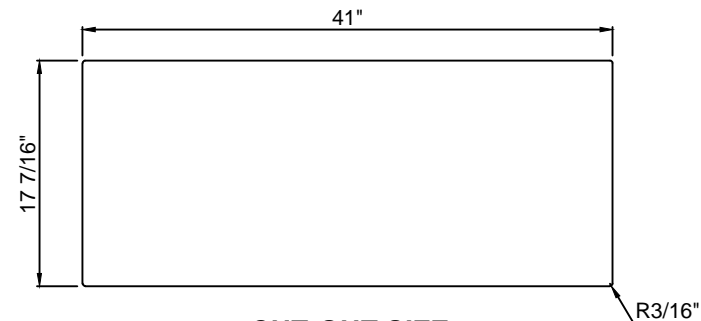


FRONT ELEVATION

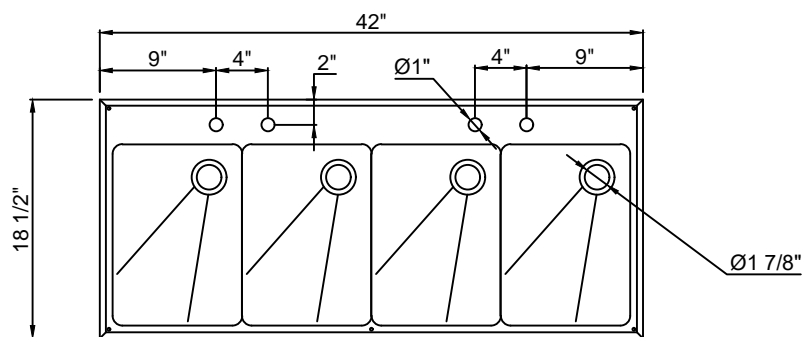


SIDE VIEW

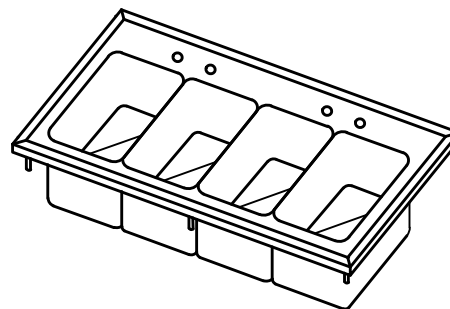
● 18 GA. STAINLESS STEEL
CONSTRUCTION.



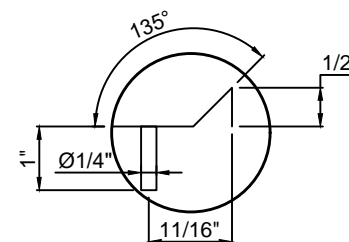
CUT-OUT SIZE



PLAN VIEW



ISOMETRIC



DETAIL "A"

DRAWIN FOR :	MAT.	TOP :18 GA. S/S BASE :	DATE	REVISIONS	KLINGER'S TRADING
REF. NO :	REQ'D/ITEM :				
ITEM NAME : Drop in Bar Sinks	DATE : Apr / 12 / 2021				
PROD . NO. : DBS4	BY :				
SCALE: 1/2" =1'-0"	CHECKED BY :				