

# ASSEMBLY INSTRUCTIONS FOR HANDS-FREE SANITIZER DISPENSER

081720

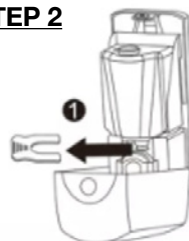
3601 S. Banker St. Effingham, IL 62401 • P.O. BOX 609 • Ph: (888) 431-2667 • Fax: (800) 433-2667



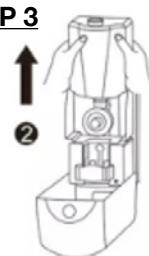
## STEP 1



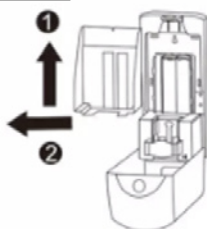
## STEP 2



## STEP 3



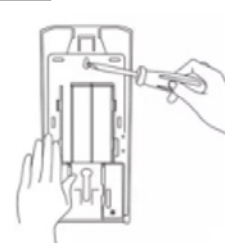
## STEP 4



## STEP 5



## STEP 6



## STEP 7



### PARTS:

- (1) HANDS-FREE SANITIZER DISPENSER

### HARDWARE:

- (4) 8-32 MACHINE SCREWS (USED WITH UNIVERSAL MOUNTING PLATE OPTION)
- (4) 8-32 HEX NUTS (USED WITH UNIVERSAL MOUNTING PLATE OPTION)
- (4) MOUNTING SCREWS
- (4) DRYWALL ANCHORS

### TOOLS REQUIRED:

- PHILLIPS HEAD SCREWDRIVER

### INSTRUCTIONS:

1. OPEN THE DISPENSER BY PRESSING THE BUTTON LOCATED ON THE TOP OF THE DISPENSER AND CAREFULLY PULL THE COVER FORWARD. AN OPTIONAL LOCK BUTTON AND KEY IS PROVIDED TO PREVENT UNNECESSARY TAMPERING OF THE DISPENSER UNIT.
2. ONCE THE FRONT COVER IS OPEN, LOCATE AND REMOVE THE PLASTIC TAB THAT IS SECURING THE SANITIZER CONTAINER IN THE DISPENSER. BE SURE TO SET THIS PLASTIC TAB ASIDE TO BE USED WHEN REASSEMBLING THE DISPENSER.
3. CAREFULLY REMOVE THE CONTAINER AND SET ASIDE.
4. REMOVE THE BATTERY COVER BASED ON THE ARROWS IN THE DIAGRAM. SLIDE THE COVER UP THEN OUT AWAY FROM THE UNIT.
5. USE THE BOTTOM COVER AS A TEMPLATE AND MARK THE HOLE LOCATION ONTO THE WALL.
6. USE THE SUPPLIED SCREWS AND DRYWALL ANCHORS TO ATTACH THE BOTTOM COVER TO THE WALL.
7. INSERT 4, C SIZE BATTERIES (NOT INCLUDED) AND SLIDE THE COVER SECURELY OVER THE BATTERIES.
8. CAREFULLY RE-INSERT THE SANITIZER CONTAINER INTO THE DISPENSER AND REINSERT THE PLASTIC TAB INTO THE CONTAINER SLOT.
9. CLOSE THE FRONT COVER OF THE DISPENSER AND TURN ON THE SWITCH LOCATED ON THE RIGHT SIDE OF THE UNIT TO TEST THE HANDS-FREE SANITIZER DISPENSER.

sales@johnboos.com

www.johnboos.com